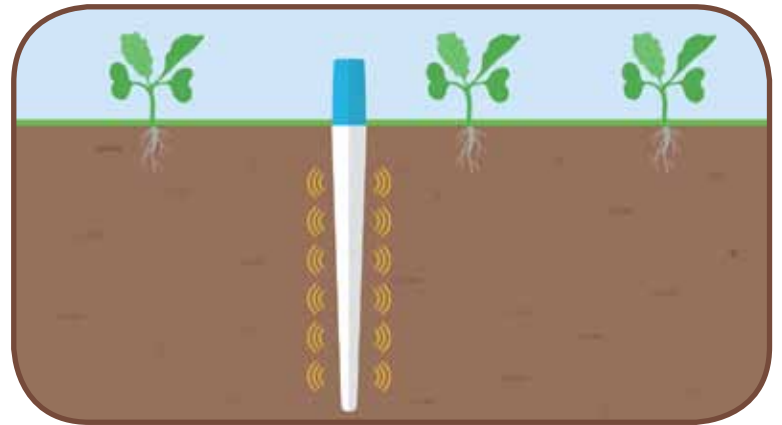


SENTEK BLUETOOTH PROBE SERVICE

Sentek's new Bluetooth Probe offers the benefit of continuous monitoring via a **weekly monitoring service**.

The probe measures a 90cm soil profile in 10cm slices. Data is uploaded weekly by a Fruition technician.

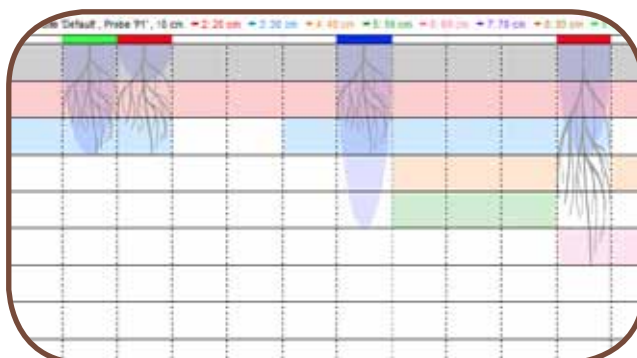


ADVANTAGES

- No cables or solar panels – most discreet probe available.
- Minimal soil disturbance.
- Soil moisture and soil temperature readings every 30 minutes.
- Easy-to-see effects of crop water use, onset of stress, irrigation, rainfall, and depth of root activity.
- Technician visits ensure regular, reliable data uploading and plant monitoring.
- Local (within 3km) weather forecast.
- Easy-to-understand weekly irrigation recommendations.
- Ideal for areas with no or marginal cellular network coverage.

OPTIONAL EXTRAS

- Rainfall logged from nearby weather station.
- TriSCAN sensors – nutrient salt concentration.



SCAN OR CLICK TO
VIEW SAMPLE REPORTS